

Public Document Pack

PRESENTATION SLIDES

DEVELOPMENT MANAGEMENT COMMITTEE - WEDNESDAY, 25TH APRIL, 2018

The following presentation slides were used at the Development Management Committee meeting.

Planning Applications (Pages 1 - 50)

This page is intentionally left blank

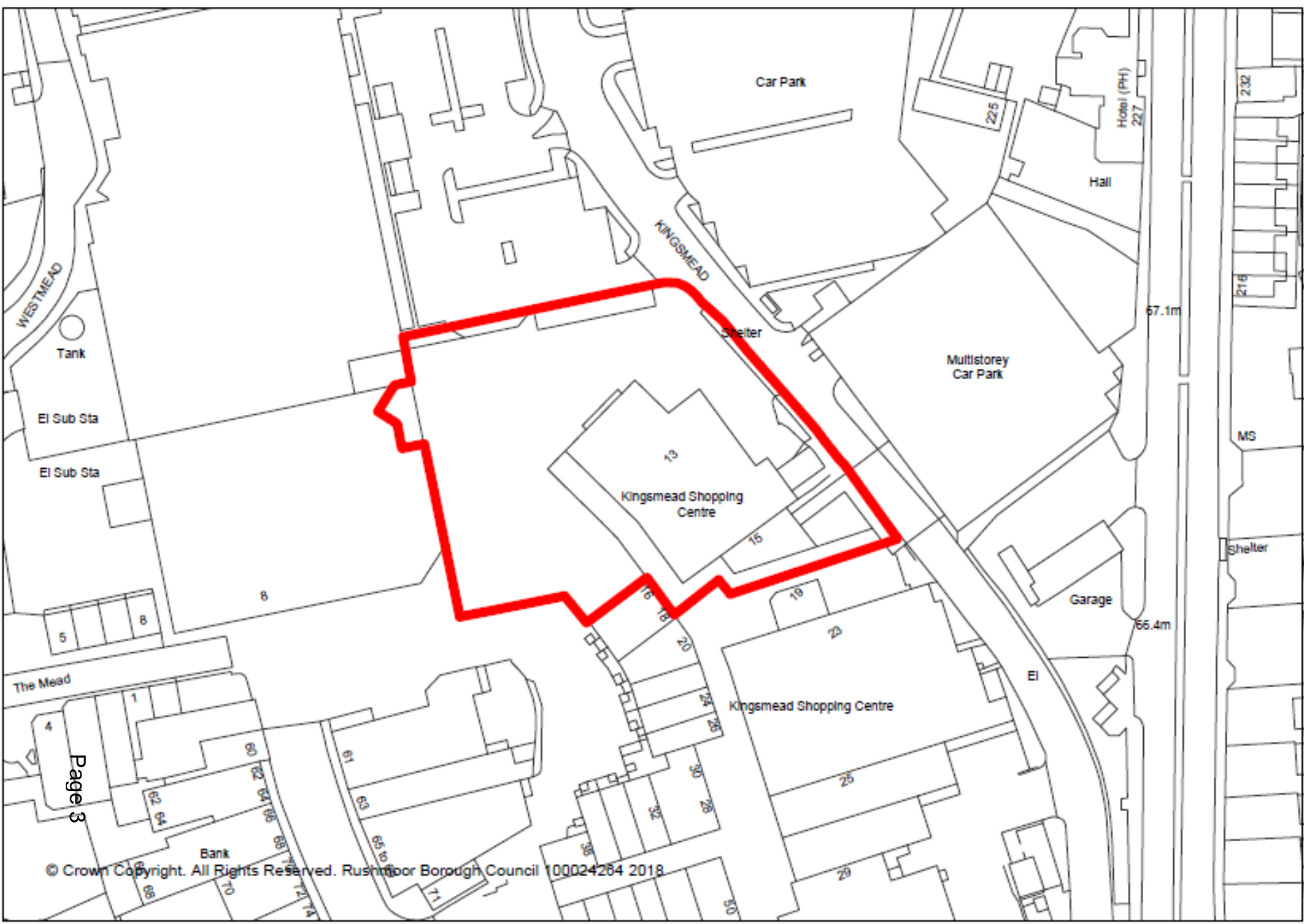
Development Management Committee

25th April 2018

Development Management Committee

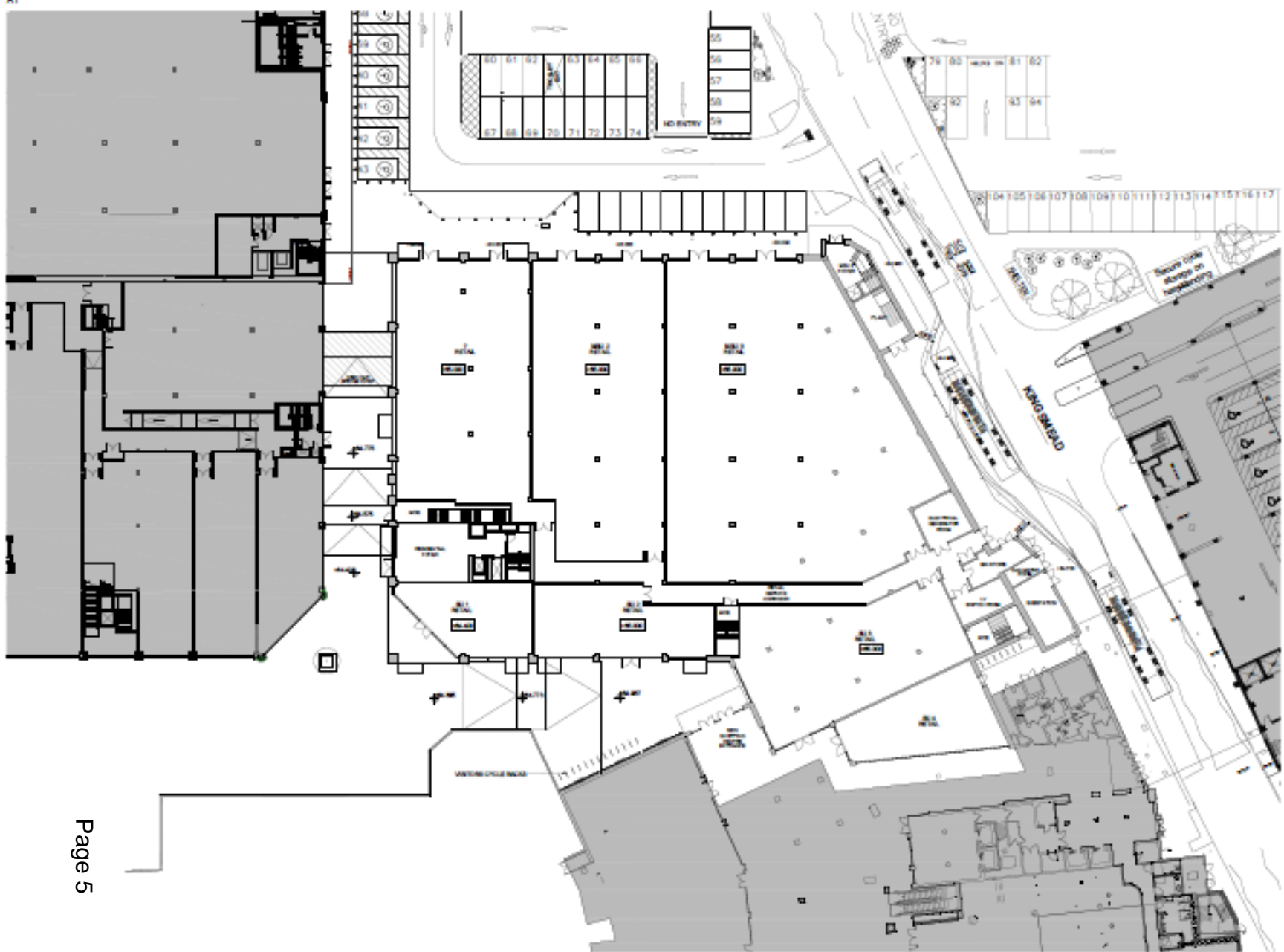
Item 4 : 18/00025/FULPP

Block 3 Queensmead
Farnborough

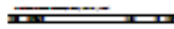




© Crown Copyright. All Rights Reserved. Rushmoor Borough Council 100024264 2018

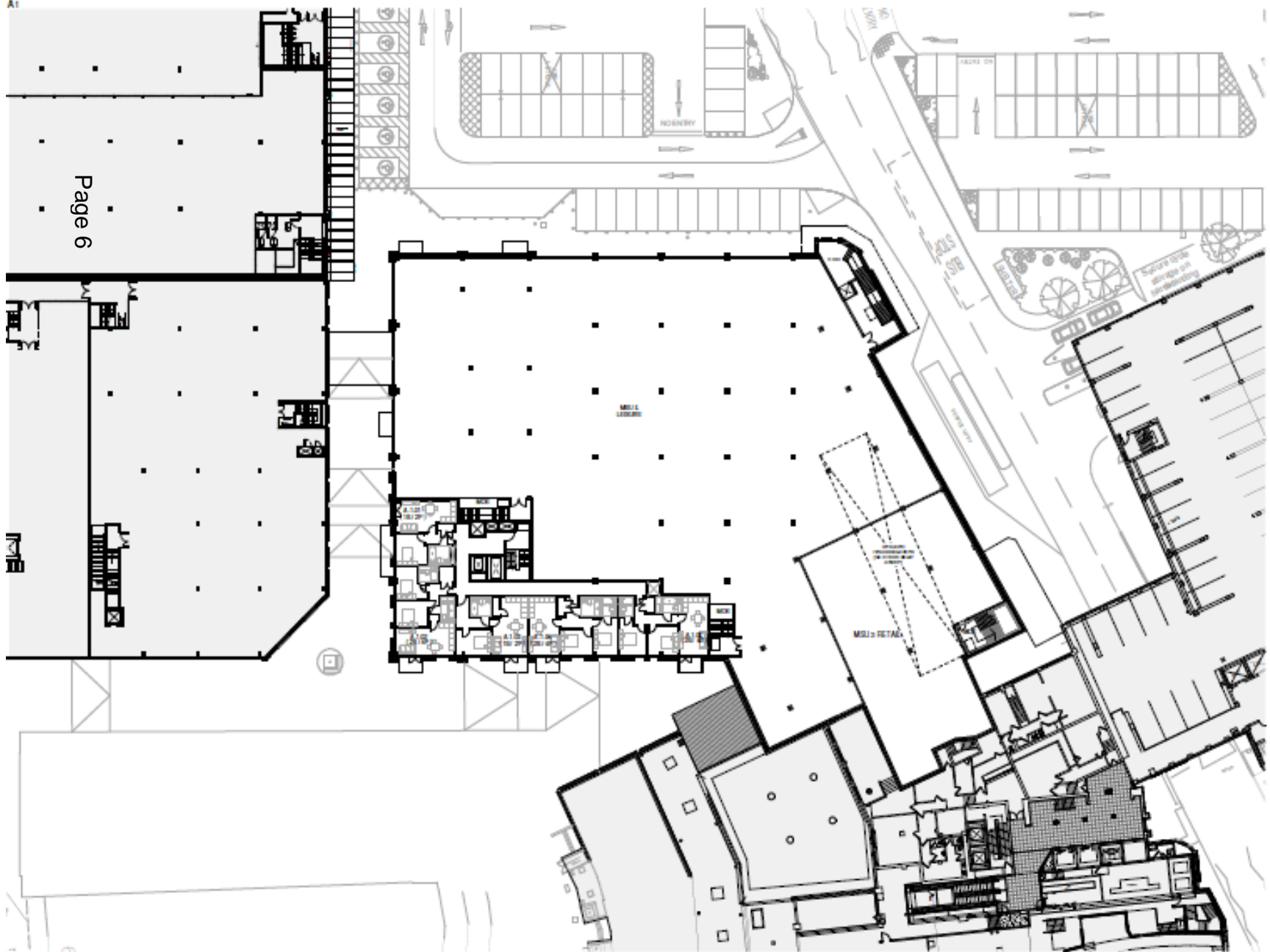


NO.	REVISION	DATE	BY	CHECKED
1	ISSUED FOR PERMIT	15/05/2024	AL	AL
2	ISSUED FOR CONSTRUCTION	15/05/2024	AL	AL
3	ISSUED FOR CONSTRUCTION	15/05/2024	AL	AL
4	ISSUED FOR CONSTRUCTION	15/05/2024	AL	AL
5	ISSUED FOR CONSTRUCTION	15/05/2024	AL	AL
6	ISSUED FOR CONSTRUCTION	15/05/2024	AL	AL
7	ISSUED FOR CONSTRUCTION	15/05/2024	AL	AL
8	ISSUED FOR CONSTRUCTION	15/05/2024	AL	AL
9	ISSUED FOR CONSTRUCTION	15/05/2024	AL	AL
10	ISSUED FOR CONSTRUCTION	15/05/2024	AL	AL



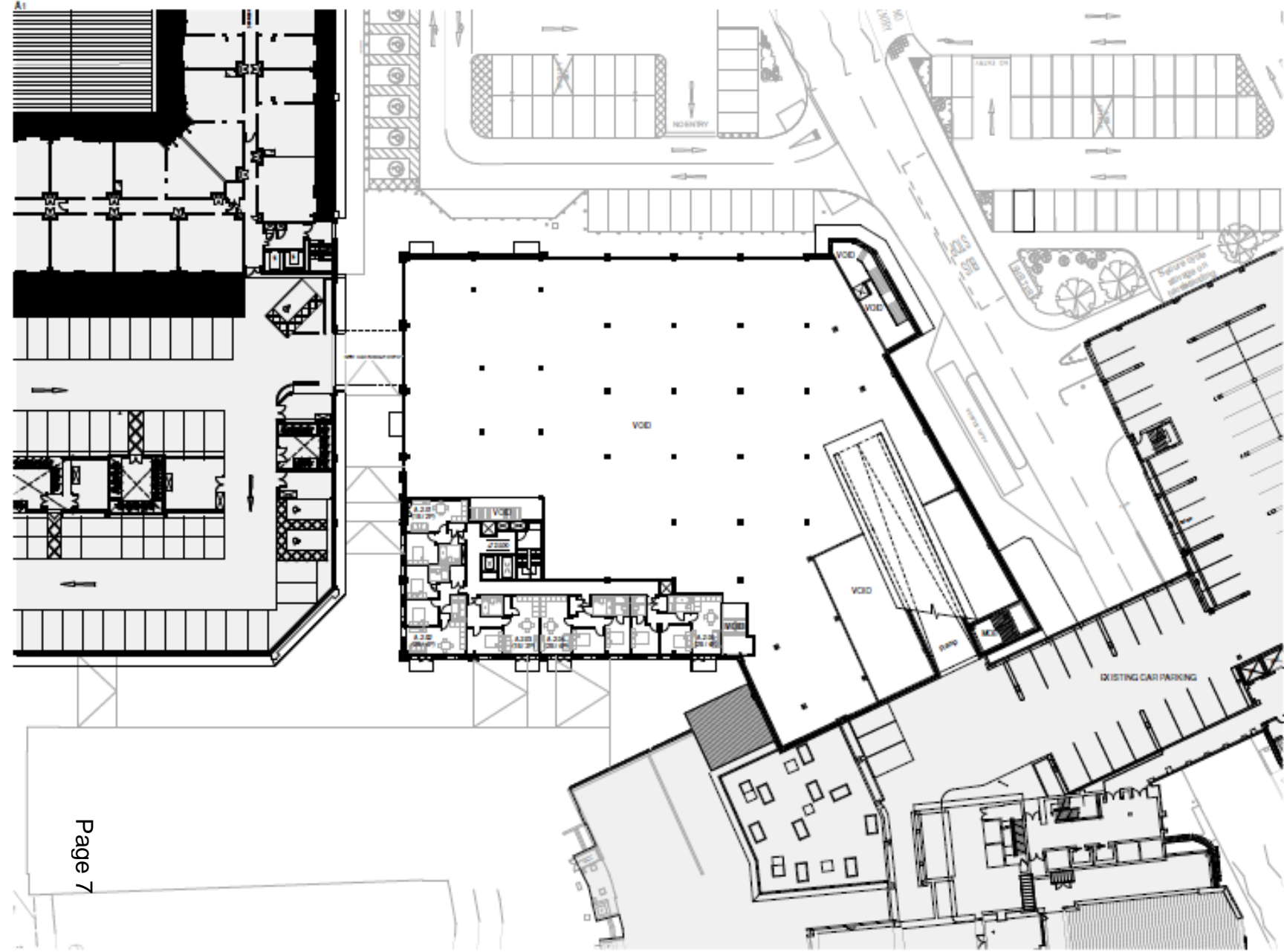
PROPORTION 1:1

Page 6



FARNBOROUGH TOWN CENTRE, BLOCK 3

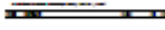
DATE	NO.	DESCRIPTION	APPROVED BY
10/10/2018	1	ISSUED FOR PERMIT	[Signature]
10/10/2018	2	REVISED PER COMMENTS	[Signature]
10/10/2018	3	REVISED PER COMMENTS	[Signature]
10/10/2018	4	REVISED PER COMMENTS	[Signature]
10/10/2018	5	REVISED PER COMMENTS	[Signature]
10/10/2018	6	REVISED PER COMMENTS	[Signature]
10/10/2018	7	REVISED PER COMMENTS	[Signature]
10/10/2018	8	REVISED PER COMMENTS	[Signature]
10/10/2018	9	REVISED PER COMMENTS	[Signature]
10/10/2018	10	REVISED PER COMMENTS	[Signature]



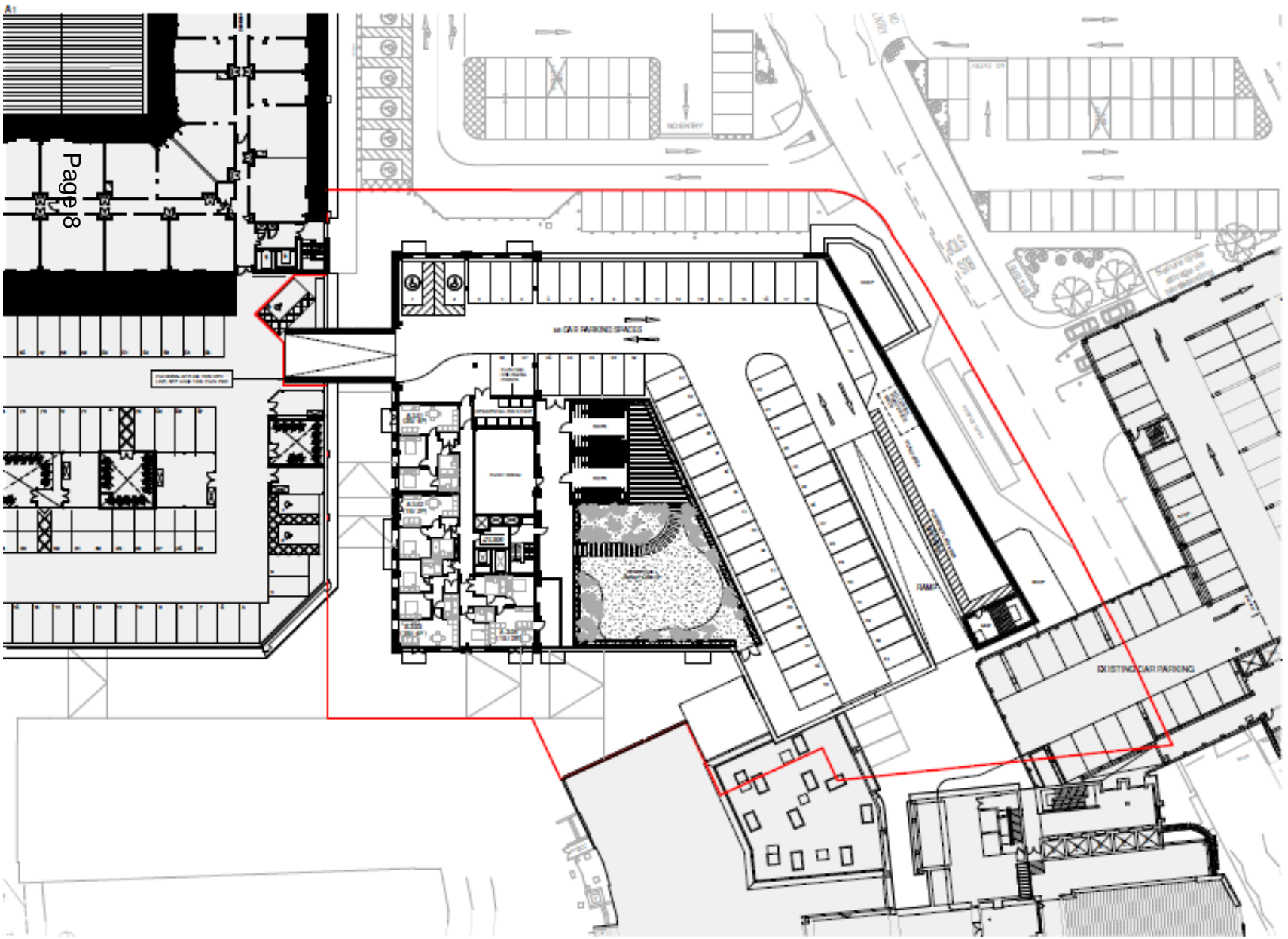
Page 7

FARNBOROUGH TOWN CENTRE, BLOCK 3





ORIENTATION



Page 8

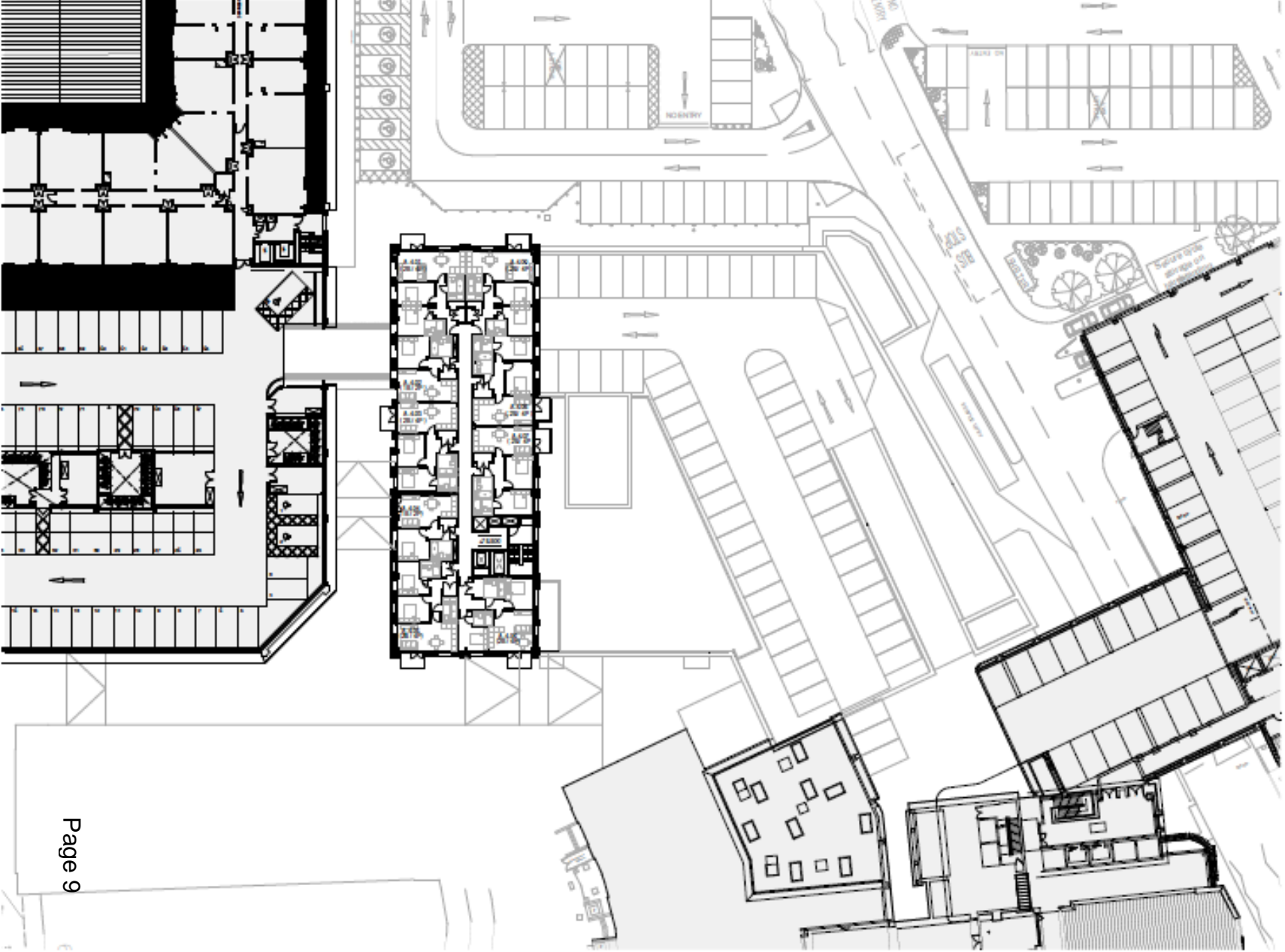
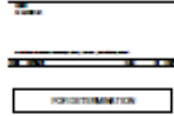
PLANNING APPROVAL THIS SITE
LARGE OPEN SPACE THIS FLOOR PLAN

NEW CAR PARKING SPACES

EXISTING CAR PARKING

FARNBOROUGH TOWN CENTRE, BLOCK 3

DATE	NO.	BY	REVISION
10/10/2017	1	AS	ISSUE FOR PERMITTING
10/10/2017	2	AS	ISSUE FOR PERMITTING
10/10/2017	3	AS	ISSUE FOR PERMITTING
10/10/2017	4	AS	ISSUE FOR PERMITTING
10/10/2017	5	AS	ISSUE FOR PERMITTING
10/10/2017	6	AS	ISSUE FOR PERMITTING
10/10/2017	7	AS	ISSUE FOR PERMITTING
10/10/2017	8	AS	ISSUE FOR PERMITTING
10/10/2017	9	AS	ISSUE FOR PERMITTING
10/10/2017	10	AS	ISSUE FOR PERMITTING



Page 9

FARNBOROUGH TOWN CENTRE, BLOCK 3

DATE	NO.	DESCRIPTION	APPROVED BY
10/10/2018	01	Issue for Planning	[Signature]
10/10/2018	02	Issue for Construction	[Signature]
10/10/2018	03	Issue for Construction	[Signature]



- Materials Key**
- 1 Brick - red/white mix
 - 2 Brick - red/white mix
 - 3 Brickwork - red/white mix
 - 4 Brickwork - red/white mix
 - 5 Brickwork - red/white mix
 - 6 Brickwork - red/white mix
 - 7 Brickwork - red/white mix
 - 8 Brickwork - red/white mix
 - 9 Brickwork - red/white mix
 - 10 Brickwork - red/white mix
 - 11 Brickwork - red/white mix
 - 12 Brickwork - red/white mix
 - 13 Brickwork - red/white mix
 - 14 Brickwork - red/white mix
 - 15 Brickwork - red/white mix
 - 16 Brickwork - red/white mix
 - 17 Brickwork - red/white mix
 - 18 Brickwork - red/white mix
 - 19 Brickwork - red/white mix
 - 20 Brickwork - red/white mix
 - 21 Brickwork - red/white mix
 - 22 Brickwork - red/white mix
 - 23 Brickwork - red/white mix
 - 24 Brickwork - red/white mix
 - 25 Brickwork - red/white mix
 - 26 Brickwork - red/white mix
 - 27 Brickwork - red/white mix
 - 28 Brickwork - red/white mix
 - 29 Brickwork - red/white mix
 - 30 Brickwork - red/white mix
 - 31 Brickwork - red/white mix
 - 32 Brickwork - red/white mix
 - 33 Brickwork - red/white mix
 - 34 Brickwork - red/white mix
 - 35 Brickwork - red/white mix

Page 11

DATUM +80.000



KEY PLAN

FARNBOROUGH TOWN CENTRE, BLOCK 3

NO.	DATE	BY	CHKD.	DESCRIPTION
001	15/03/2023	[Signature]	[Signature]	ISSUED FOR INFORMATION

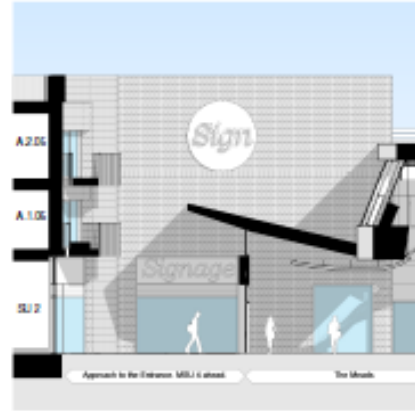


- Materials Key**
- 1 Brick, red/terracotta
 - 2 Brick, red/terracotta
 - 3 Red brick, PCC skeleton visible in north face corner
 - 4 Red brick, PCC skeleton, brick work
 - 5 Concrete panel, PCC skeleton, brick work
 - 6 Slipped brick, set in a random pattern
 - 7 Randomly placed windows, concrete block
 - 8 Glass, PCC skeleton, red granite
 - 9 Timber clad brickwork, stone and grey
 - 10 Concrete panel, stone/brick, stone/brick
 - 11 Randomly placed windows, stone/brick
 - 12 White, PCC skeleton, stone/brick
 - 13 Concrete panel, stone/brick, PCC skeleton
 - 14 Glass, PCC skeleton, stone/brick
 - 15 Brickwork, red brick, PCC skeleton
 - 16 Red brick, PCC skeleton, stone/brick
 - 17 Red brick, PCC skeleton, stone/brick
 - 18 Red brick, PCC skeleton, stone/brick
 - 19 Red brick, PCC skeleton, stone/brick
 - 20 Red brick, PCC skeleton, stone/brick
 - 21 Red brick, PCC skeleton, stone/brick
 - 22 Red brick, PCC skeleton, stone/brick
 - 23 Red brick, PCC skeleton, stone/brick
 - 24 Red brick, PCC skeleton, stone/brick
 - 25 Red brick, PCC skeleton, stone/brick
 - 26 Red brick, PCC skeleton, stone/brick
 - 27 Red brick, PCC skeleton, stone/brick
 - 28 Red brick, PCC skeleton, stone/brick
 - 29 Red brick, PCC skeleton, stone/brick
 - 30 Red brick, PCC skeleton, stone/brick
 - 31 Red brick, PCC skeleton, stone/brick
 - 32 Red brick, PCC skeleton, stone/brick
 - 33 Red brick, PCC skeleton, stone/brick
 - 34 Red brick, PCC skeleton, stone/brick
 - 35 Red brick, PCC skeleton, stone/brick
 - 36 Red brick, PCC skeleton, stone/brick
 - 37 Red brick, PCC skeleton, stone/brick
 - 38 Red brick, PCC skeleton, stone/brick
 - 39 Red brick, PCC skeleton, stone/brick
 - 40 Red brick, PCC skeleton, stone/brick
 - 41 Red brick, PCC skeleton, stone/brick
 - 42 Red brick, PCC skeleton, stone/brick
 - 43 Red brick, PCC skeleton, stone/brick
 - 44 Red brick, PCC skeleton, stone/brick
 - 45 Red brick, PCC skeleton, stone/brick
 - 46 Red brick, PCC skeleton, stone/brick
 - 47 Red brick, PCC skeleton, stone/brick
 - 48 Red brick, PCC skeleton, stone/brick
 - 49 Red brick, PCC skeleton, stone/brick
 - 50 Red brick, PCC skeleton, stone/brick
 - 51 Red brick, PCC skeleton, stone/brick
 - 52 Red brick, PCC skeleton, stone/brick
 - 53 Red brick, PCC skeleton, stone/brick
 - 54 Red brick, PCC skeleton, stone/brick
 - 55 Red brick, PCC skeleton, stone/brick
 - 56 Red brick, PCC skeleton, stone/brick
 - 57 Red brick, PCC skeleton, stone/brick
 - 58 Red brick, PCC skeleton, stone/brick
 - 59 Red brick, PCC skeleton, stone/brick
 - 60 Red brick, PCC skeleton, stone/brick
 - 61 Red brick, PCC skeleton, stone/brick
 - 62 Red brick, PCC skeleton, stone/brick
 - 63 Red brick, PCC skeleton, stone/brick
 - 64 Red brick, PCC skeleton, stone/brick
 - 65 Red brick, PCC skeleton, stone/brick
 - 66 Red brick, PCC skeleton, stone/brick
 - 67 Red brick, PCC skeleton, stone/brick
 - 68 Red brick, PCC skeleton, stone/brick
 - 69 Red brick, PCC skeleton, stone/brick
 - 70 Red brick, PCC skeleton, stone/brick
 - 71 Red brick, PCC skeleton, stone/brick
 - 72 Red brick, PCC skeleton, stone/brick
 - 73 Red brick, PCC skeleton, stone/brick
 - 74 Red brick, PCC skeleton, stone/brick
 - 75 Red brick, PCC skeleton, stone/brick
 - 76 Red brick, PCC skeleton, stone/brick
 - 77 Red brick, PCC skeleton, stone/brick
 - 78 Red brick, PCC skeleton, stone/brick
 - 79 Red brick, PCC skeleton, stone/brick
 - 80 Red brick, PCC skeleton, stone/brick
 - 81 Red brick, PCC skeleton, stone/brick
 - 82 Red brick, PCC skeleton, stone/brick
 - 83 Red brick, PCC skeleton, stone/brick
 - 84 Red brick, PCC skeleton, stone/brick
 - 85 Red brick, PCC skeleton, stone/brick
 - 86 Red brick, PCC skeleton, stone/brick
 - 87 Red brick, PCC skeleton, stone/brick
 - 88 Red brick, PCC skeleton, stone/brick
 - 89 Red brick, PCC skeleton, stone/brick
 - 90 Red brick, PCC skeleton, stone/brick
 - 91 Red brick, PCC skeleton, stone/brick
 - 92 Red brick, PCC skeleton, stone/brick
 - 93 Red brick, PCC skeleton, stone/brick
 - 94 Red brick, PCC skeleton, stone/brick
 - 95 Red brick, PCC skeleton, stone/brick
 - 96 Red brick, PCC skeleton, stone/brick
 - 97 Red brick, PCC skeleton, stone/brick
 - 98 Red brick, PCC skeleton, stone/brick
 - 99 Red brick, PCC skeleton, stone/brick
 - 100 Red brick, PCC skeleton, stone/brick

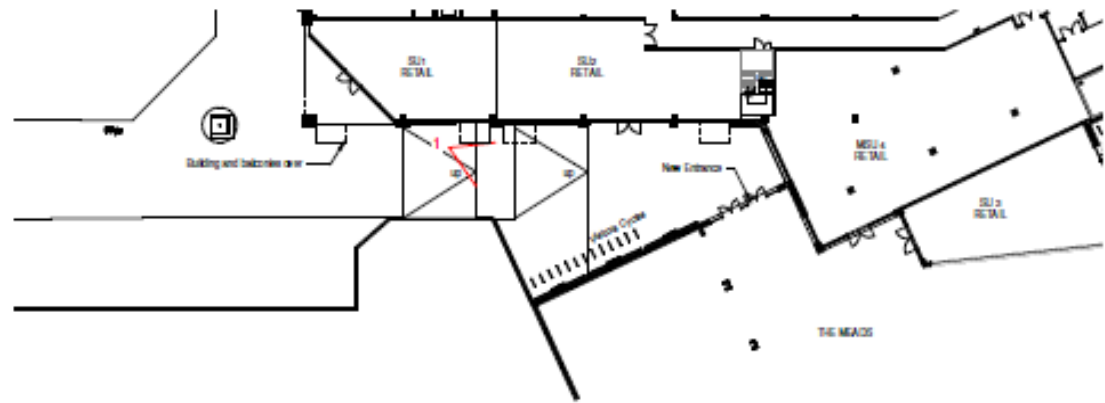


FARNBOROUGH TOWN CENTRE, BLOCK 3

NO	DATE	BY	CHKD	APPD	DESCRIPTION
1	10/10/2023
2
3
4
5
6
7
8
9
10



1 | P-111 PERSPECTIVE VIEW (FOR ILLUSTRATION ONLY)



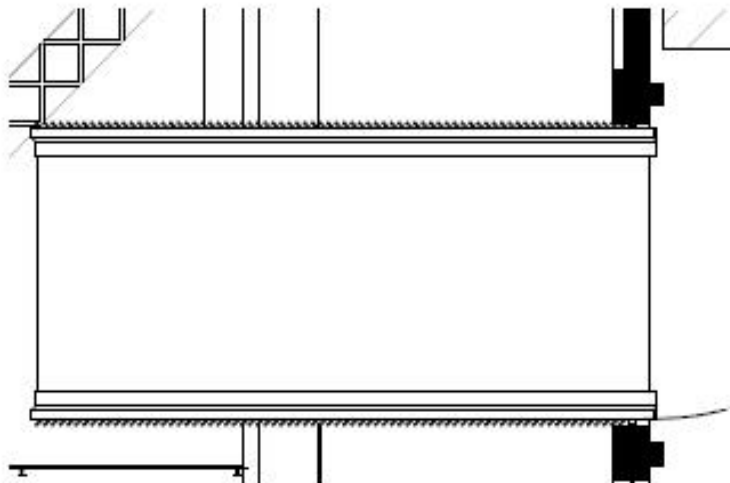
5 | P-111 PROPOSED GROUND FLOOR PLAN



4 | P-111 PROPOSED ELEVATION



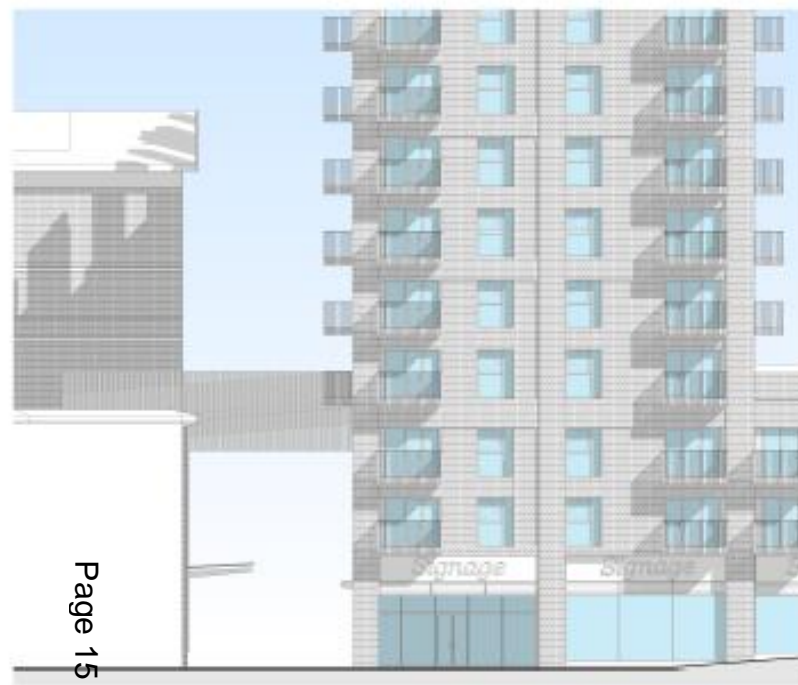
1 | P-110 3D VIEW CAR PARK BRIDGE - FOR ILLUSTRATION ONLY



Scale

1:100

FOR DETERMINATION

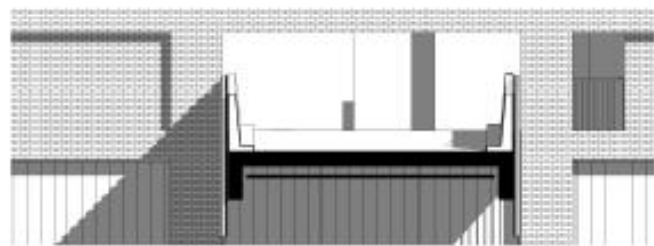


3 | P-110 PROPOSED BRIDGE ELEVATION

2 | P-110 PROPOSED LINK BRIDGE PLAN



4 | P-110 3D View ON CAR BRIDGE - FOR ILLUSTRATION ONLY



5 | P-110 PROPOSED SECTION AA

DATE	NO.	DESCRIPTION	BY	FOR
10/10/2017	1	ISSUED FOR PERMIT	LS	PLANNING
10/10/2017	2	REVISED FOR PERMIT	LS	PLANNING
10/10/2017	3	REVISED FOR PERMIT	LS	PLANNING
10/10/2017	4	REVISED FOR PERMIT	LS	PLANNING
10/10/2017	5	REVISED FOR PERMIT	LS	PLANNING
10/10/2017	6	REVISED FOR PERMIT	LS	PLANNING
10/10/2017	7	REVISED FOR PERMIT	LS	PLANNING
10/10/2017	8	REVISED FOR PERMIT	LS	PLANNING
10/10/2017	9	REVISED FOR PERMIT	LS	PLANNING
10/10/2017	10	REVISED FOR PERMIT	LS	PLANNING



LYONS+SLEEMAN+HOARE | Architects

Nero Brewery, Cricket Green, Harlow Winstrey, Harlow RG20 8QA
Tel: 01252 844144 Fax: 01252 844500 Web: www.lsharch.co.uk

FOR ILLUSTRATION ONLY

Job N: Drg N	Rev	Scale	Status
16066 / P-401			PLANNING
Date	Director	Author	Check
15/12/2017	GGG	FBI	GGG

NOTES: All Rights are appropriate and have been reserved and approved in a manner as defined by the current edition of the RIBA Code of Accepted Practice. It remains the sole responsibility of the client and any development depends on the terms on the basis of this information and is not intended to be a contract or a statement of fact. The design and construction is subject to change without notice. The drawing is to be used in conjunction with all other relevant materials.

Job	16066/08/01/02/01/22
Job Name	WARRINGBOROUGH TOWN CENTRE, (BLOCK 2)
Drawing	VIEW A CROSS KINGSMAID ROAD AND WAINSBURY'S CAR PARK

This drawing may be scaled or more information in the scale for the Planning application process only. Do not scale for any other purpose. Use RASPD dimensions only. Subject to the survey and all appropriate approvals. All dimensions are in millimetres. All work shall only be undertaken, written or otherwise in the light of the RIBA Code of Accepted Practice and all other relevant materials. This drawing is to be used in conjunction with all other relevant materials.



Page 17

LYONS+SLEEMAN+HOARE | Architects

Nero Brewery, Cricket Green, Harby Wintney, Hants RG27 8QA
Tel: 01252 844144 Fax: 01252 844300 Web: www.lsharch.co.uk

FOR ILLUSTRATION ONLY

Job N. Dtg N	Rev	Scale	Status
16066 / P-402	-	-	PLANNING
Date	Director	Author	Check
15/12/2017	GGG	FRI	GGG

Job	Job N. Dtg N
RA RINDOROUGH TOWN CENTRE, BLOCK 3	16066 / P-402
Drawing	SO15/12/2017
SO15/12/2017	SO15/12/2017

NOTE: All figures are approximate and have been rounded and approved in a manner as defined by the current edition of the BUILDING ACT Code of Measuring Practice. Figures shown in the current copy of the report and any development agreement are based on the latest available information and drawings. For the latest information contact the architect or the client.

This drawing may be used in a manner not intended by the architect for the purposes of planning or other purposes. It is not to be used for any other purpose, and the architect does not accept any liability for any such use. All drawings are the property of the architect and shall remain the property of the architect. No part of this drawing may be reproduced without the written permission of the architect. This drawing is to be used for consultation with all other relevant parties.









gym
gymnastics



the
meads
FARNBOROUGH

NEW UNITS COMING SOON
1,476 SQ FT - 15,449 SQ FT

wilko F.HINDS StickySisters Supardrug PREZZO

SALHIA | ST.MOODWEN

the meads farnborough.com









Page 25

LYONS+SLEEMAN+HOARE | Architects

Nero Brewery, Cricket Green, Harby Wintney, Hants RG27 8QA
Tel: 01252 844144 Fax: 01252 844500 Web: www.lsharch.co.uk

FOR ILLUSTRATION ONLY

Job No	Drg No	Rev	Scale	Status
16066	/ P-401			PLANNING
Date	Director	Author	Checker	
15/12/2017	GGG	FBI	GGG	

NOTES: All Rights are acknowledged and have been reserved and approved in a manner as defined by the consent officer of the RUSHMOOR Local Planning Authority. The consent officer of the council and any development decisions are made on the basis of the information provided in this document. In the interests of transparency in the design and building process. Registered from Ordnance Survey mapping under License Number 01000171200 EA 10021040

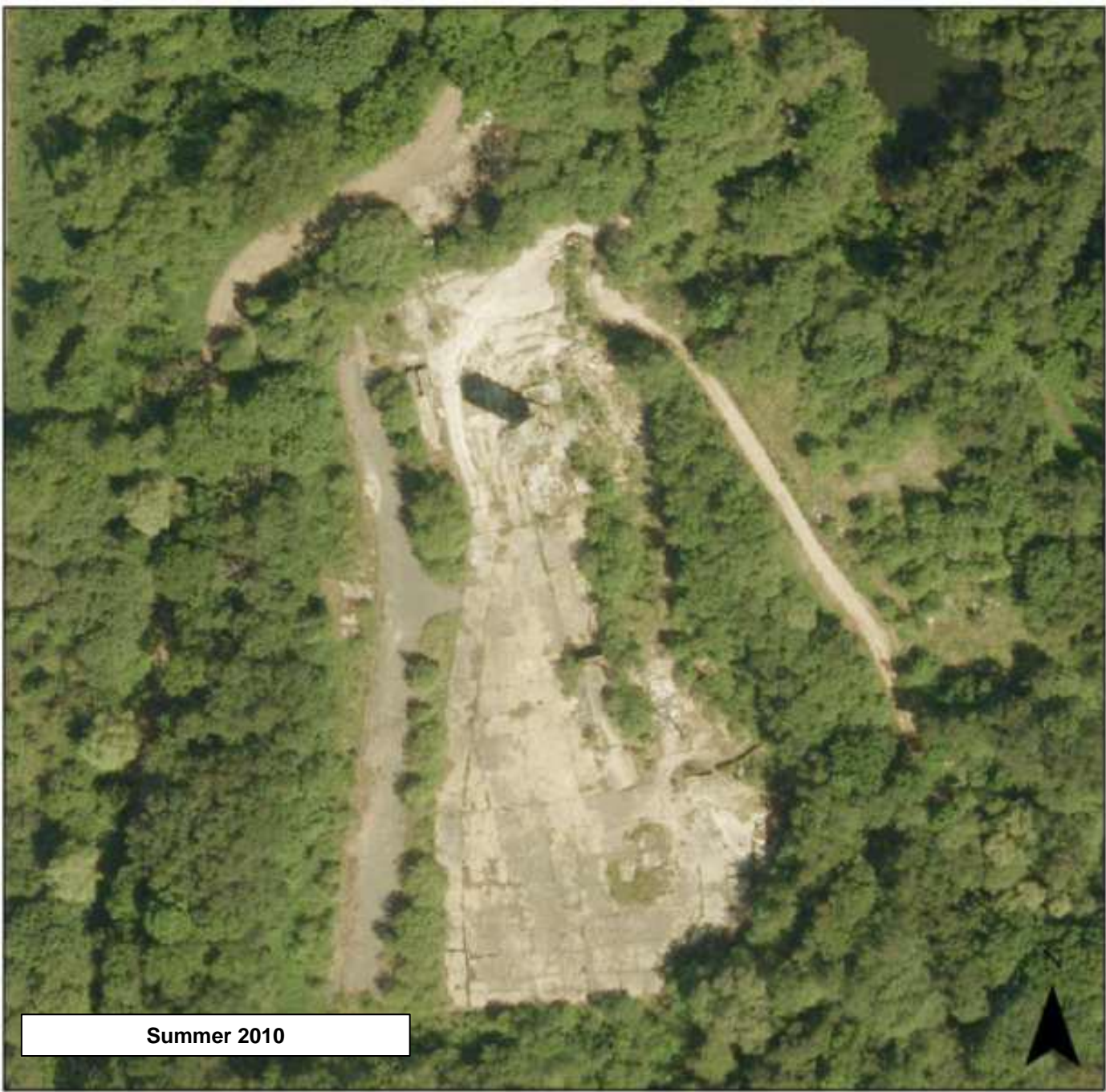
Job	16 RUSHMOOR TOWN CENTRE, BLOCK 2
Drawing	VIEW A CROSS KINGSMAN ROAD AND SAINSBURY'S CAR PARK

This drawing may be scaled or more enhanced in the scale for the Planning application process only. Do not scale for any other purpose. Use for illustration only. Subject to the survey and all appropriate approvals. All dimensions are to finished 100mm over any final construction, unless otherwise stated in the schedule of dimensions and construction. This drawing is to be used in conjunction with all other relevant materials.

Development Management Committee

Agenda Item No.4 : Enforcement

**Former Lafarge Site, Hollybush
Lane, Aldershot**



Summer 2010

Former Lafarge Site - 2013 Aerial Photography



0 50 100 200 Metres

© 2010 Rushmoor Borough Council © 2013 Bluesky
© Crown copyright and database rights 2016 Ordnance Survey 100024264

Scale 1:1,250 @A4







Former Lafarge Site - 2016 Aerial Photography



Enforcement Notice Plan as modified by Appeals





5 December 2017



5 December 2017



5 December 2017





6 April 2018



6 April 2018



6 April 2018



6 April 2018



5 December 2017



6 April 2018



5 December 2017



6 April 2018



5 December 2017



6 April 2018



6 April 2018



Development Management Committee

25th April 2018